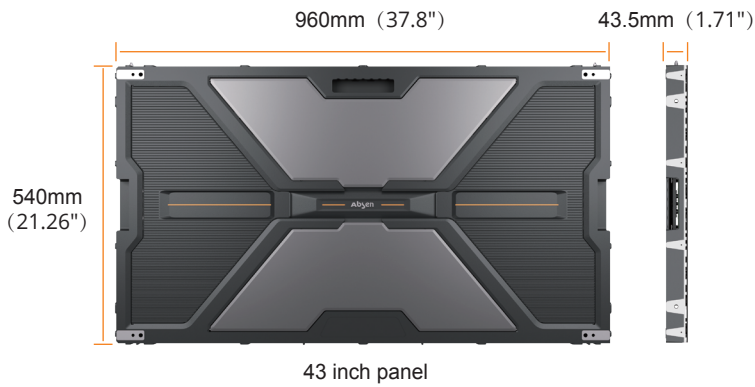


NX Series

Unparalleled visual experience.



Ultra-thin and lightweight



16:9
Aspect ratio

43.5mm 1.71"
Ultra-thin design

20kg/m² 44lbs/m²
Ultra-lightweight

Items	NX1.2	NX1.5	NX1.8	NX2.5	NX3.7
Panel resolution	768*432	640*360	512*288	384*216	256*144
4K display	5*5pcs	6*6pcs	8*8pcs	10*10pcs	15*15pcs
8K display	10*10pcs	12*12pcs	15*15pcs	20*20pcs	30*30pcs

Ultimate display performance



- 800nits normal brightness version
- 1500nits high brightness version(optional)
- A5C+ color calibration technology
- High grayscale at low brightness
- TÜV Rheinland low blue light certification

• Corporate, mall, chain store, transportation hub, etc

◀ N-in-1 small panel

Flexible N-in-1 small panel, enhancing project dimension compatibility



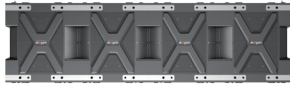
2-in-1 small panel



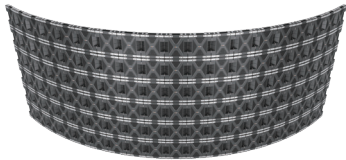
3-in-1 small panel



4-in-1 small panel



Horizontal 4-in-1 small panel



• Concave splicing with small panels

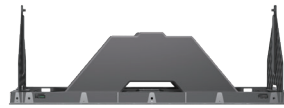


• 90° seamless L-shape splicing

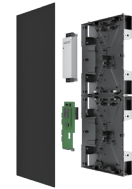


• Cube

◀ Installation and maintenance



Rear maintenance of large panel



Front maintenance of small panel

- Rotary clamshell design for easy rear maintenance
- Front/rear maintenance of module, PSU, receiving card, etc.
- Supports hanging, wall-mounting and stacking installation
- Precise floating connector for bright and dark lines adjustment
- X/Y/Z axis alignment for flatness adjustment between panels

◀ Product specification

Parameters	NX1.2	NX1.5	NX1.8 (Normal)	NX1.8 (High brightness)	NX2.5 (Normal)	NX2.5 (High brightness)	NX3.7 (Normal)	NX3.7 (High brightness)
LED type	Black SMD1010	Black SMD1212	Black SMD1515	Black SMD1515	Black SMD1515	Black SMD1515	Black SMD1515	Black SMD1515
Pixel pitch (mm)	1.2	1.5	1.87	1.87	2.5	2.5	3.75	3.75
Panel dimensions (W*H*D, mm)	960x540x43.5mm(37.80x21.26x1.71") / 960x270x43.5(37.80x10.63x1.71") / 240x540x43.5(10.63x21.26x1.71") / 240x810x43.5(10.63x31.89x1.71") / 240x1080x43.5(10.63x42.52x1.71")							
Brightness (nit)	600	800	800	1500	800	1500	800	1500
Refresh rate (Hz)	3840	3840	3840	3840	3840	3840	3840	3840
Grayscale (bit)	14	16	16	16	16	16	16	16
Contrast ratio	3500:1	4000:1	4000:1	6000:1	4500:1	7600:1	5200:1	7400:1
Color temperature (K)	6500	6500	6500	6500	6500	6500	6500	6500
Viewing angle (H/V, °)	140/120	150/150	160/160	160/160	160/160	160/160	160/160	160/160
Drive mode	1/54	1/45	1/36	1/36	1/27	1/27	1/18	1/18
AC operating voltage (V)	100~240	100~240	100~240	100~240	100~240	100~240	100~240	100~240
Power consumption (max./avg., W/m ²)	420/140	480/160	420/140	606/202	450/150	534/178	480/160	609/203
IP Rating (Front/Rear)	IP40/IP21	IP40/IP21	IP40/IP21	IP40/IP21	IP40/IP21	IP40/IP21	IP40/IP21	IP40/IP21
Certification	FCC, ETL, CE, RoHS							

Note:

1. NX1.5 only has 800nits normal brightness version.
2. Provides optional dual backup version to ensure continuous transmission of signal and power supply.
3. Small panel adopts rotary clamshell design as well and support rear maintenance of PSU and receiving card.
4. Z-axis alignment function is only available for ground stacking installation.



HQ Office
7120 Lake Ellenor Dr Orlando, FL 32809
407.203.8870 info@usabsen.com
www.usabsen.com

East Service Center&Warehouse
7307 Presidents Drive, Orlando, FL 32809
West Service Center & Showroom
20311 Valley Blvd Suite J, Walnut, CA 91789

Twitter: @Absen_Inc
Facebook: @AbsenInc
LinkedIn: @AbsenInc
IG: @absen_inc